

WARRANTY

M.B.P., will any repairs necessary during the first 6 months after purchase of a new unit, with the exceptions shown under 1 and 2 below, and under the conditions shown in item 3.

- 1.-Damage caused by external abuse, customer negligence, or failure to operate the unit in accordance with the instructions supplied with the unit.
- 2.-Normal maintenance items.
- 3.-Withing the firts months after purchase, M.B.P. will pay 100% of the cost of covered repairs.

In no case will M.B.P.liability extend beyond repair or repalacement of the equipment. Such liability is limited to the amount of the original purchase price paid for the unit, minus a reasonable deduction for the time the unit has been in service. It is the responsibility of the purchaser under this warranty to ship or deliver the failed paint sprayer to the authorized service center at the purchaser's expence. Parts or components covered under this warranty may either be repaired or replaced at M.B.P. option.

Equipent not covered by M.B.P. warranty. Accessories or components of equipment sold by M.B.P. that are nort manufactured by M.B.P. are subject to the warranty, if any, of their manufacturer. M.B.P. will provide purchaser with reasonable assistance in making such claims.

The Industry Department of The Basque Government, states that all electric and pneumatic airless equipment manufacture by M.B.P. S.L., follows the "CE" standards under the number 83/392/CEE.



MBP, S.L.
Plgno. Ansoleta,
C. Anboto, 17
01006 VITORIA (SPAIN)
P.O.Box 3144
Phone. 34 945 132744
Fax. 34 945134756
e-mail: mbpspray@retemail.es
www.mbpspray.com

IMP 025- DICIEMBRE 2004

MBP

ELECTRIC AIRLESS UNIT 030



I.MANUAL

**DECLARACION DE CONFORMIDAD ‘CE’
‘EC’ DECLARATION OF CONFORMITY**

INDEX

General safety	Page. 2
Grounding	Page. 3
Pressure relief procedure	Page. 4
Troubleshooting chart	Page. 5
Parts	Page. 6
Start up	Page. 8
Cleaning	Page. 9

MODELO / MODEL 030

Este producto cumple con la siguiente directiva de la Comunidad Europea.

This Product complies with the following European Community Directive.

Directiva 98/37/CEE y 94/9/CEE Atex sobre máquinas.
Machinery Directive 98/37/EC and 94/9/EC Atex Directive.

APROBADO POR /
APPROVED BY FERNANDO ORTIZ

FECHA / DATE

TECHNICAL DETAILS

- * Maximum pressure: 180-200 bar.
- * Maximum flow rate: 0,8 l/min.
- * Maximum tip size : 0.015’’
- * Motor: 1.100W - 220V - 50 Hz.
- * Weight: 18 Kgs.

MBP, S.L. figura inscrita en el Registro Industrial del País Vasco con el N° 01/8030 y cumple los requisitos para el desarrollo de su actividad comercial.

MBP, S.L. is registered in the Industrial Register of the Basque Country with the N° 01/8030.

CLEANING INSTRUCTIONS

- 1.- Before cleaning the unit, make sure the pressure has been released.
- 2.- With trigger lock engaged, remove spray tip from gun and clean it.
- 3.- Put one liter of solvent into the pail.
- 4.- Lower the pressure setting by turning the pressure knob. Disengage trigger lock and trigger gun into the paint can, until solvent appears. Continue pumping solvent through the pump, hose and gun until it runs clear.
- 5.- Now follow the pressure relief procedure.
- 6.- Before storing for an extended period of time place a light oil in the inlet valve and let the pump run for seconds.

GENERAL SAFETY

This equipment generates very high fluid pressure. Spray from the gun, leaks or ruptured components can inject fluid through your skin and into your body and cause extremely serious bodily injury. Also, fluid injected or splashed into the eyes or on the skin can cause serious damage.

NEVER point the spray gun at anyone or at any part of the body. **NEVER** put hand or fingers over the spray tip. **NEVER** try to «blow back» paint; this is **NOT** an air system.

ALWAYS follow the **Pressure Relief Procedure**, before cleaning or removing the spray tip or servicing any system equipment.

NEVER try to stop or deflect leaks with your hand or body.

Be sure equipment safety devices are operating properly before each use.

MEDICAL ALERT-AIRLESS SPRAY WOUNDS

If any fluid appears to penetrate your skin, get **EMERGENCY MEDICAL CARE AT ONCE. DO NOT TREAT AS A SIMPLE CUT.** Tell the doctor exactly what fluid was injected.

Whenever you stop spraying, even for a moment, always set the gun safety latch in the closed or «safe» position, making the gun inoperative. Failure to set the safety latch can result in accidental triggering of the gun.

GROUNDING

To reduce the risk of static sparking, ground the sprayer and all other spray equipment used or located in the spray area. **CHECK** your local electrical code for detailed grounding instructions for your area and type of equipment. Be sure to ground all of this spray equipment:

- 1.- Sprayer: connect a ground wire and clamp to a true earth ground.
- 2.- Fluid hoses: use only grounded hoses.

- 3.- Spray gun: obtain grounding through connection to a properly grounded fluid hose and sprayer.
- 4.- Object being sprayed: according to local code.
- 5.- Fluid supply container: according to local code.
- 6.- All solvent pails used when flushing, according to local code. Use only metal pails, which are conductive. Do not place the pail on a non-conductive surface, such as paper or cardboard, which interrupts the grounding continuity.
- 7.- To maintain grounding continuity when flushing or relieving pressure, always hold a metal part of the gun firmly to the side of a grounded metal pail, the trigger the gun.

NEVER use a damaged hose. Before each use, check the entire hose for cuts, leaks, abrasion, bulging cover, or damage or movement of the hose couplings.

If any of these conditions exist, replace the hose immediately. **DO NOT** try to recouple high pressure hose or mend it with tape or any other device. A repaired hose cannot contain the high pressure fluid.

HANDLE AND ROUTE HOSES CAREFULLY, do not pull on hoses to move equipment. Keep hoses clear of moving parts and hot surfaces of the pump and gas engine. Do not use fluids or solvents which are not compatible with the inner tube and cover of the hose.

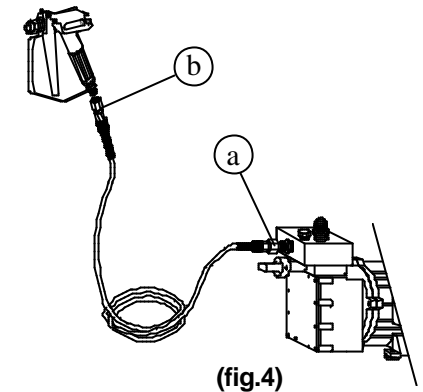
This sprayer can develop 200 bar **MAXIMUM WORKING PRESSURE**. Be sure that all spray equipment and accessories used are rated to withstand this pressure.

DO NOT exceed the maximum working pressure of any component or accessory used in the system.

Use extreme caution when cleaning or changing spray tips. If the spray tip clogs while spraying, engage the gun safety latch immediately. **ALLWAYS** follow the **Pressure Relief Procedure** and the remove the spray tip to clean it.

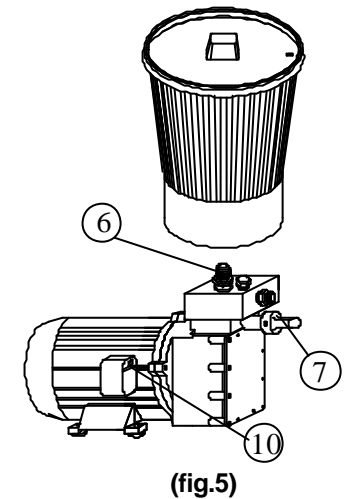
A) Connect hose and gun.

Using two wrenches to tighten the fitting of the hose at the nipple (a). Connect the other side to the gun (b).



B) Check the working of the valve.

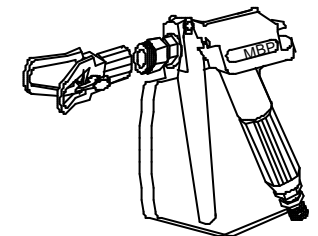
- Put water or oil in the intake valve (6).
- Turn pressure knob to « minimum » (low).
- Switch on the pump.
- Turn pressure knob to «medium» pressure.
- With a pencil, push inlet valve back and forth. In this way the pump will suction the water or oil. Test for suction by placing palm (hand) over suction fitting (6). If suction is felt, proceed to prime. If no suction is felt, the pump must be rebled.
- Connect the suction pail and the filter.



C) Install the spray tip and tip base.

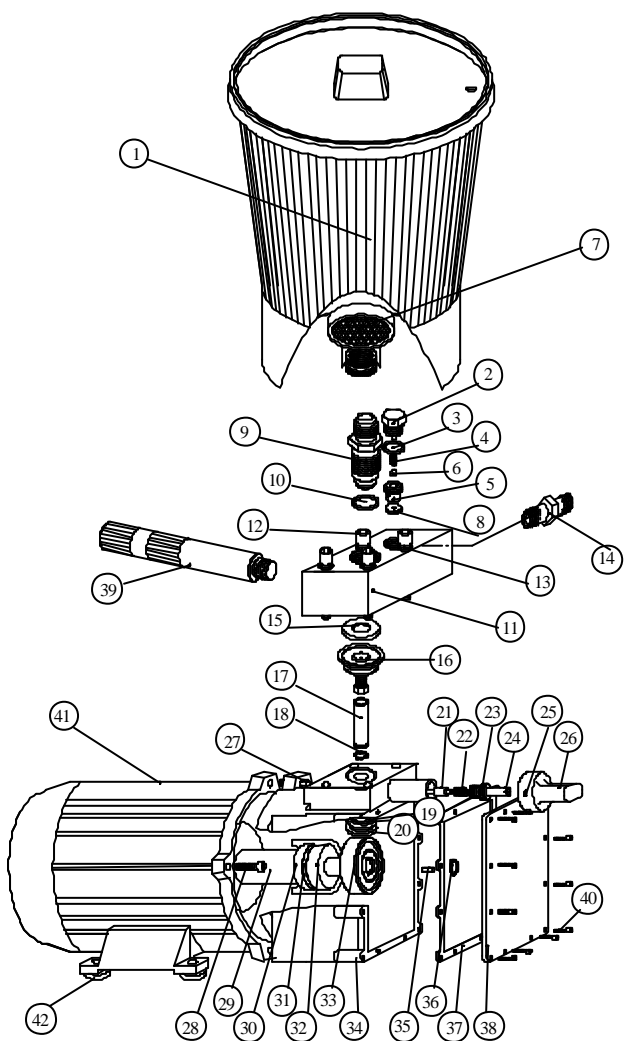
Be sure the gun safety latch is engaged.

- D)** To prime the pump, turn pressure knob to «low» (7). Switch on the pump (10), and slowly increase the pressure. Keep the gun triggered until all air is forced out of the system and the paint flows freely from the gun. Release the trigger and engage the gun safety latch.



(fig.6)

N°	REF.	DESCRIPCION	C
1.-	D.220.00	PAIL	1
2.-	30.300.04	PLUG	1
3.-	J.200.04	JOINT	1
4.-	080.160.03	SPRING	1
5.-	30.320.00	SEAT	1
6.-	CB0.208	BALL	1
7.-	D.132.00	FILTER	1
8.-	30.300.06	JOINT	1
9.-	30.330.00	INTAKE VALVE	1
10.-	30.330.01	JOINT	1
11.-	30.300.01	HOUSING	1
12.-	CTB.009	SCREW	4
13.-	CAR.051	WASHER	4
14.-	G.100.06	NIPPLE	1
15.-	30.300.02	JOINT	1
16.-	30.340.00	DIAPHRAGM	1
17.-	30.150.00	PISTON	1
18.-	CAR.103	RETAINER	1
19.-	30.100.03	SPRING	1
20.-	30.100.02	WASHER	1
21.-	30.141.00	NEEDLE	1
22.-	30.140.02	SPRING	1
23.-	CJT.028	O-RING	1
24.-	30.140.03	REGULATOR	1
25.-	CTG.014	TIE	2
26.-	30.140.01	KNOB	1
27.-	CTA.003	SCREW	1
28.-	CTB.001	SCREW	3
29.-	30.130.01	ROD	1
30.-	CAB.010	RETAINER	1
31.-	30.130.02	WASHER	1
32.-	CB1.013	ROLLER	1
33.-	30.120.00	ROLLER	1
34.-	30.110.00	BODY	1
35.-	CPA.503	COTTER	1
36.-	CAR.107	WASHER	1
37.-	30.100.09	JOINT	1
38.-	30.100.10	COVER	1
39.-	30.300.07	WASHER	1
40.-	CTC.002	SCREW	12
41.-	30.130.00	MOTOR	1
42.-	CAB.011	SINENBLOCK	4



(fig.2)

PRESSURE RELIEF PROCEDURE

To reduce the risk of serious bodily injury, including fluid injection, splashing fluid or solvent in the eyes or on the skin, or injury from moving parts or electric shock, always follows this procedure whenever you shut off the sprayer, when checking or servicing any part of the spray system, when installing, cleaning or changing spray tips, and whenever you stop spraying.

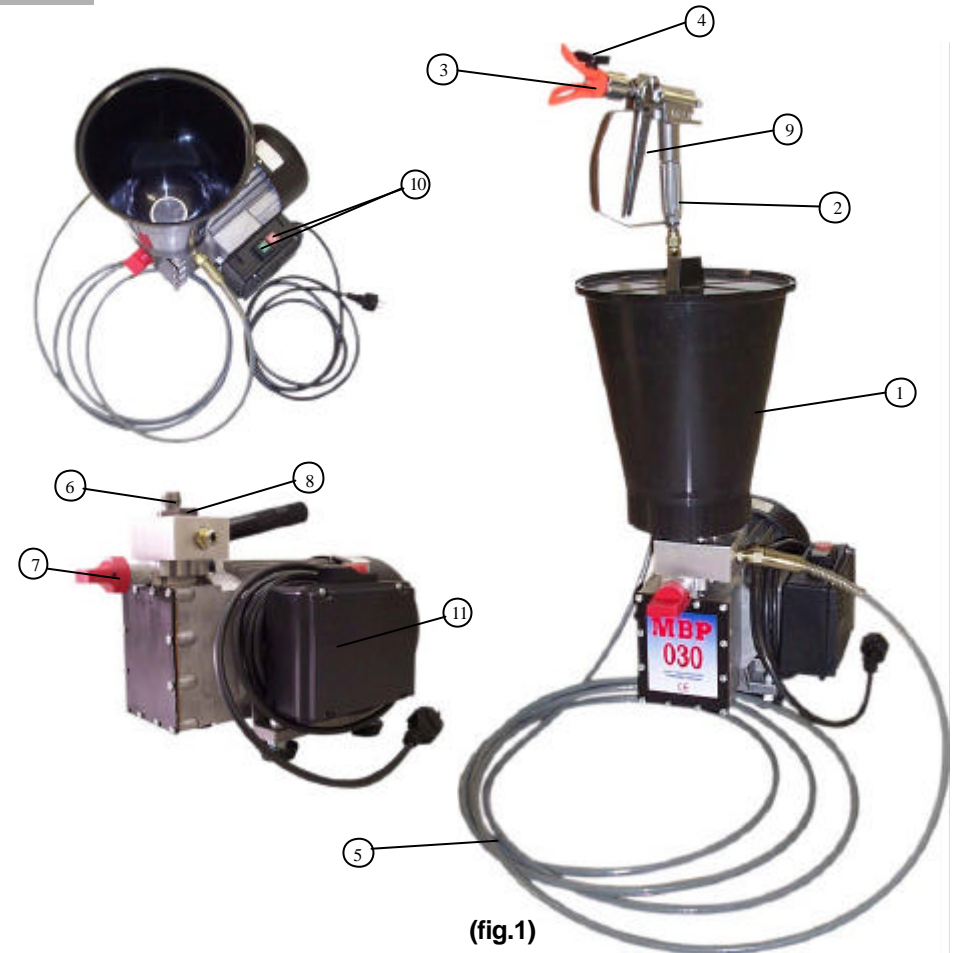
- 1.- Engage the gun safety latch.
- 2.- Turn the ON/OFF switch to OFF.
- 3.- Unplug the power supply cord.
- 4.- Disengage the gun safety latch. Hold a metal part of the gun firmly to the side of a grounded metal pail, and trigger the gun to relieve pressure.
- 5.- Engage the gun safety latch.

If you suspect that the spray tip or hose is completely clogged, or that pressure has not been fully relieved after following the steps, above, wrap a rang around the tip guard retaining nut or hose end coupling and VERY SLOWLY loosen the part to relieve pressure gradually. Now clear obstruction.

TROUBLESHOOTING CHART

TROUBLE	CAUSE	SOLUTION
Unit will no prime	Pump inlet screen plugged. Air in pump or hose.	Remove and clean. Hold gun trigger in open position and run unit about 10 seconds until air is purged. Check for siphon tube leak.
	Fluid too viscous	Prime pump with compatible solvent. Bring up to pressure, carefully remove pump from solvent container and immerse inlet tube into heavy material to be sprayed. With nozzle tip removed trigger gun until heavy material appears at gun. Replace nozzle tip and you are ready to spray.
Unit will not build up or maintain pressure	Pressure adjusting knob not properly set. Pump inlet strainer dirty. Valve worn or dirty. Air in pump or hose.	Adjust to increase pressure. Clean or temporarily remove. Replace or clean. Hold gun trigger in open position and run about 10 seconds until air is purged.
	Worn spray tip. Internal leakage.	Replace. With gun trigger closed, allow unit to pump up to pressure and shut off if pump momentarily starts, internal leak is indicated and fluid section rebuild is necessary.
	Defective diaphragm	Replace.
	Fluid leak.	Check for external leaks including hydraulic fittings attached to pressure control housing.
	Fluid too viscous.	Consult manufacturers recommendations on paint container label.
	Too large spray tip.	Change tip.
Bad spray pattern	Too large tip size. Pressure adjustment wrong. Insufficient fluid delivery.	Change to a smaller tip size. Adjust pressure control knob. Clean all strainers and filters in system.
	Fluid too viscous.	Add solvent to fluid according to manufacturer's recommendations.
Unit lacks power.	Pressure adjustment low. Improper voltage supply.	Increase. Reconnect input voltage accordingly.

PARTS



(fig.1)

- 1.- PAIL (D.220.00)
- 2.- GUN (J.200.00)
- 3.- TIP BASE (J.290.00)
- 4.- TIP (55.11.40)
- 5.- HOSE (10.33.05)
- 6.- INTAKE VALVE (30.330.00)
- 7.- PRESSURE CONTROL (30.140.00)
- 8.- OUTLET VALVE (30.320.00)
- 9.- GUN SAFETY LATCH (J.230.00)
- 10.- OFF SWITCH-ON SWITCH (CEA.026)
- 11.- ELECTRIC BOX (COMPLETE) (30.500.00)